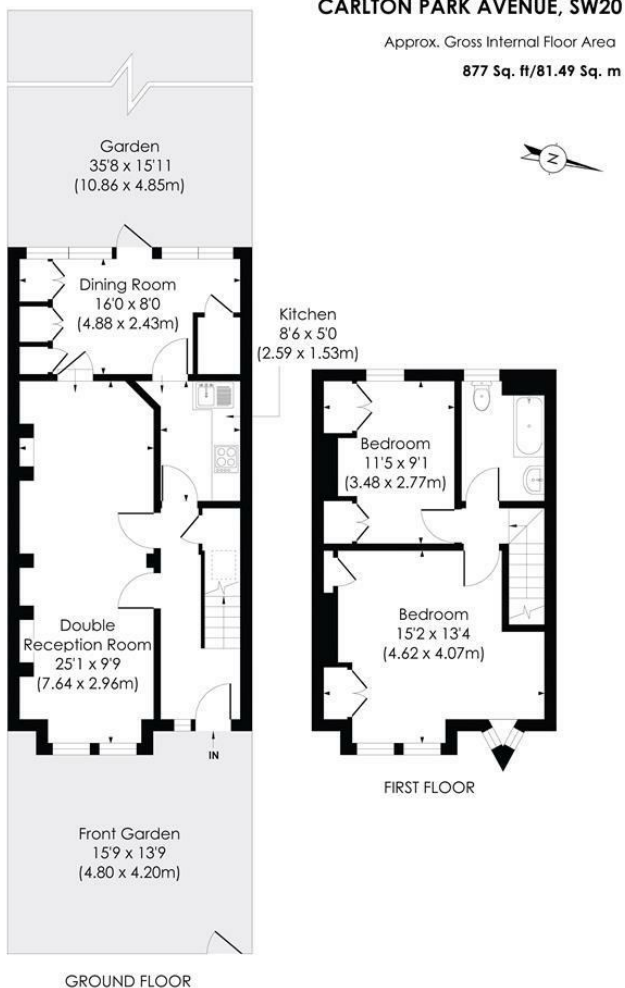


## Carlton Park Avenue Raynes Park, SW20 8BJ

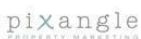
£675,000 Freehold



**This attractive 887 sqft TWO DOUBLE BEDROOM, Brick Fronted, Edwardian Apostle House is perfectly located in the middle of Carlton Park Avenue with West Facing Garden. There is a lovely through lounge with exposed brick fire places, a separate kitchen, a conservatory extension, two double bedrooms and a family bathroom. This charming house is an excellent blank canvas for an incoming purchaser to finish and extend to their own desired tastes S.T.P.P.**

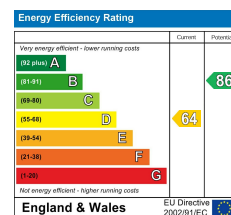
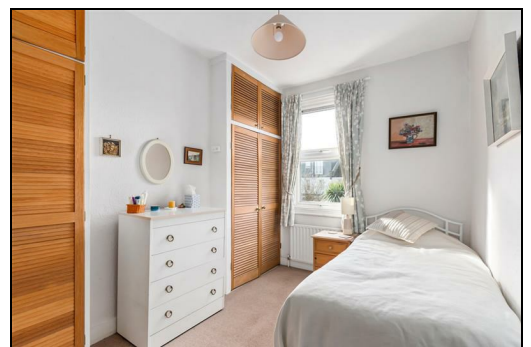
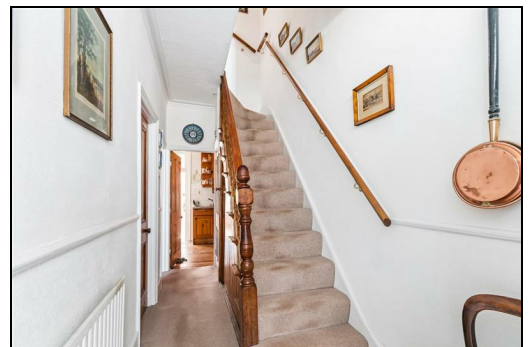


© Pixangle Property Marketing Ltd. info@pixangle.com Tel: 0208 870 2118



This floor plan has been prepared for the purpose of illustration only in accordance with the latest RICS code of measuring practice and is not to scale. All measurements and areas are approximate and whilst every effort has been made to ensure the accuracy of the plan contained here, no responsibility is taken for any error, omission or misstatement.

- Two Double Bedroom - Conservatory Extension
- Attractive Brick Fronted Edwardian Apostle House
- Lovely West Facing Garden
- Potential To Finish And Extend S.T.P.P
- Close To Raynes Park Station And High Street
- Charming Through Lounge With Exposed Brick Fireplaces
- Positioned In The Middle Of Carlton Park Avenue
- Ideal First/Second Time Purchase
- EPC - D
- Council Tax Band - D



**For Free Mortgage Quote and Best Mortgage Rates, call Ellisons Mortgage Advisor on 0208 944 9595**



Although these particulars are believed to be correct, their accuracy is not guaranteed and they do not form part of any contract.

**Celebrating 30 years of successful Sales and Lettings in Merton**

